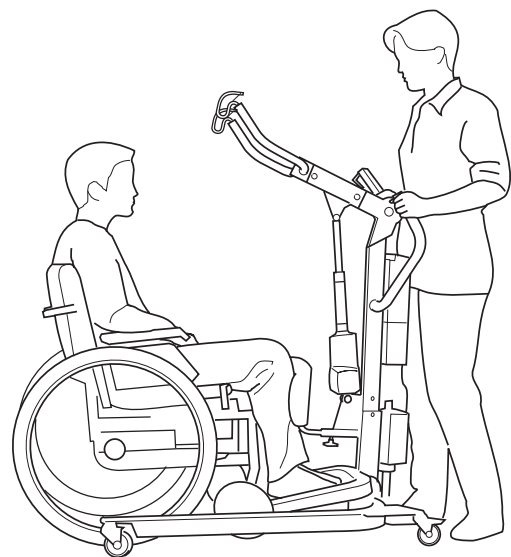


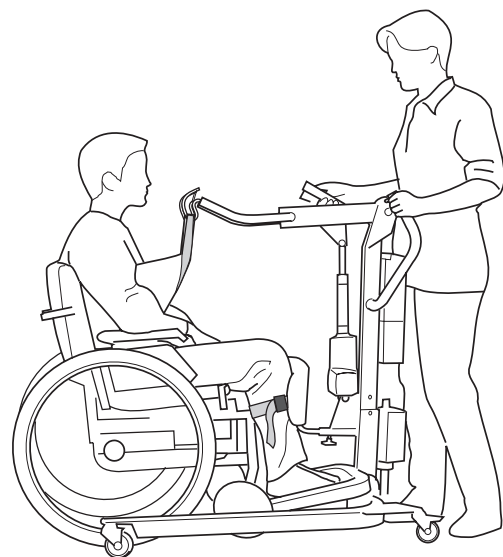
Sit-To-Stand Usage

Additional sling/vest options available at www.liko.com

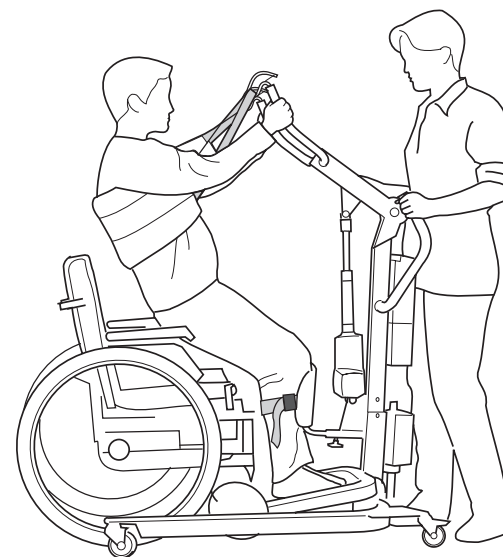
LIFTING PROCEDURES



Place the sit-to-stand vest around the patient in accordance with the vest's instruction guide. Place Sabina in front of the patient. Adjust the base width. Place the feet in the middle of the foot rest with the shins parallel to the lower-leg support. Adjust the height and depth of the lower-leg support as needed for comfortable support below the kneecap.

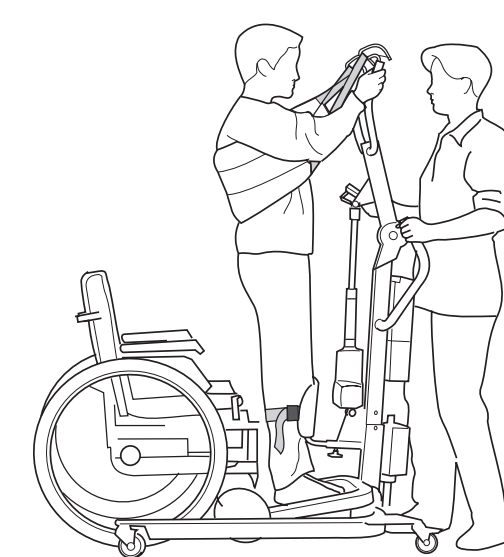


Connect the support vest's straps to the hooks in the slingbar. Tighten the calf strap.



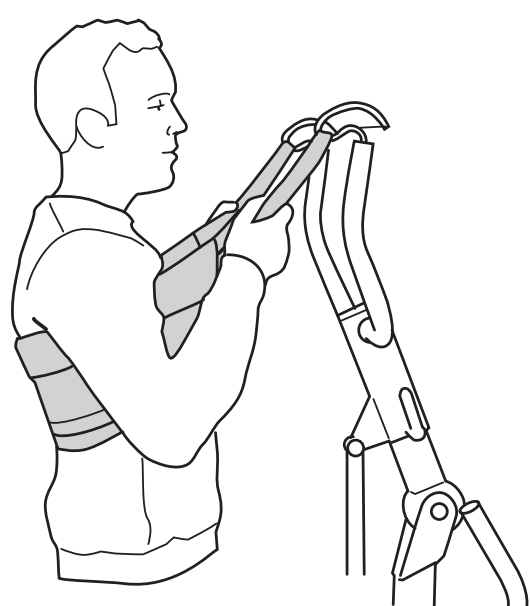
Raise the slingbar about 4-8 inches. Have the patient grasp the straps or slingbar. Continue the lifting procedure. If the patient leans back during the lift, the lifting will be made easier, preventing the vest from sliding up. The height to which the lift should proceed varies from person to person.

Before the patient is lifted from the underlying surface, but after the straps have been fully extended, make sure the straps are properly connected to the slingbar.

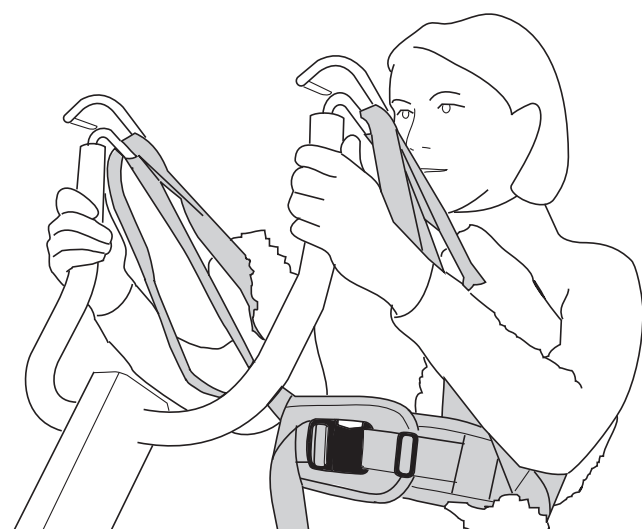


For a more upright position, continue the lifting motion to the highest position. Remember that Sabina II EE has two different speeds.

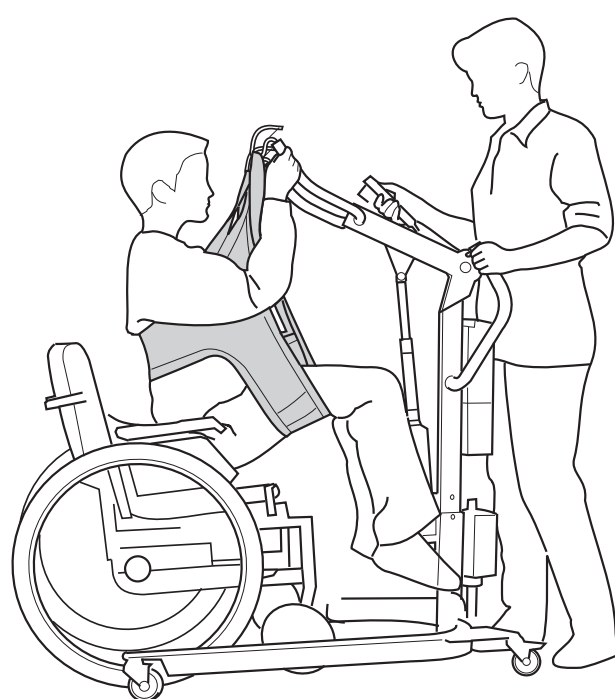
PLEASE NOTE!



In the event that the vest slides up during raising, the patient can grasp the strap loops instead of grasping the slingbar. This will help to keep the vest in place and provide good back support during raising.



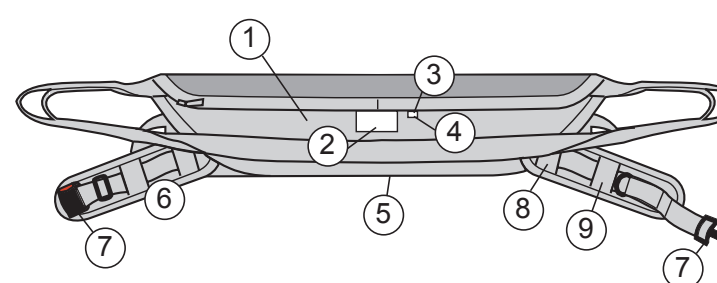
Safety latches on the sling bar hooks must move freely and prevent accidental disconnections.



To a limited extent, Sabina can also be used in lifting and transferring passive patients seated in a sling. The patient's overall mobility and health determine the choice of sling model and slingbar.

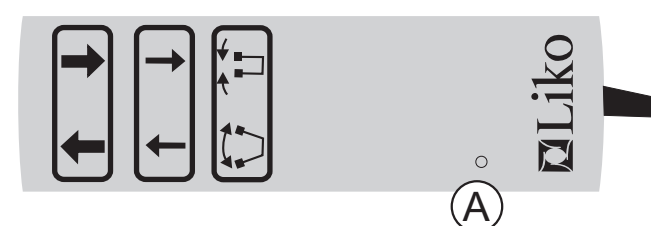
Be aware that the maximum load for passive lifting is reduced from 440 lbs. to 330 lbs; this is due to the fact that during passive lifting, the foot rest does not bear any of the load.

LIKO SUPPORTVEST, MOD. 91



1. Outer Vest
2. Label
3. Size (color marking)
4. Serial number
5. Lower edge
6. Waist belt with pads
7. Plastic Buckle
8. Inner strap guide
9. Outer strap guide

REMOTE CONTROL



Operate the lift by using the push buttons on the handcontrol.

For raising and lowering:
Directional arrows show the direction of movement (up/down).
The large arrows indicate max. speed.
The small arrows indicate half speed.
The lift stops when you release the buttons.

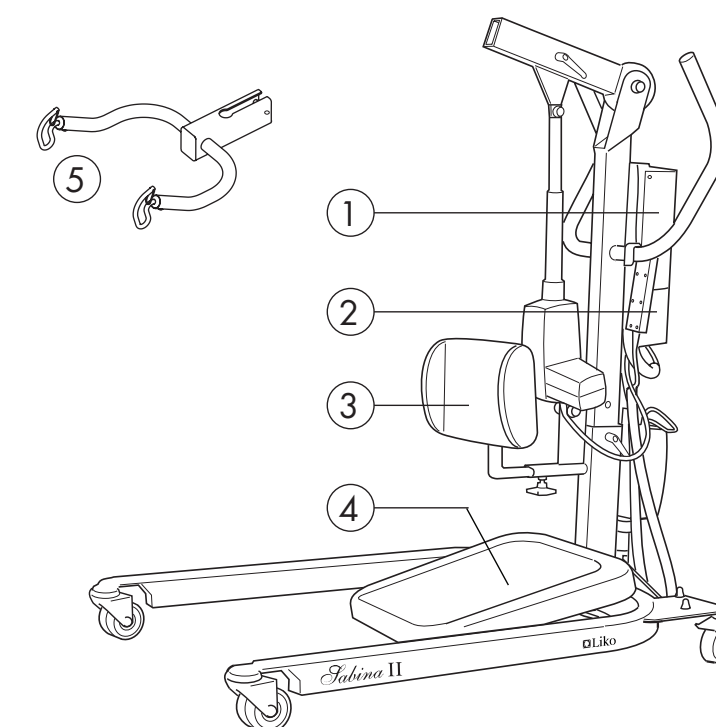
For base-width adjustment:
Press either of the two lower pushbuttons.

- ↔ Wider
- ↔ Narrower

If the battery needs charging, a LED (A) is lit on the handcontrol. There will be, however, enough power still left in the battery for several lifts.

PRODUCT DESCRIPTION

1. Batteries
2. Electric Power Pack with Emergency Stop
3. Adjustable lower-leg support
4. Footrest - Detachable
5. Slingbar



IMPORTANT REMINDERS

1. Keep wheels unlocked during routine lifts.
2. Always plug charging cable in when not in use. Lift will not operate when plugged in.
3. Sabina max load is 440 lbs for active raising and 330 lbs. for passive (seated) lifts.
4. Red emergency stop button disables lift and charger.
5. The battery is low when series of beeps are heard and LED on handcontrol lights up. Proceed with lift, charge when finished.

Liko North America
122 Grove Street
Franklin, MA 02038
Tel: (508) 553-3993, (888) 545-6671
Fax: (508) 528-6642
info@liko.com
www.liko.com
www.safeliftingportal.com

LIFTS WITH CARE

Liko